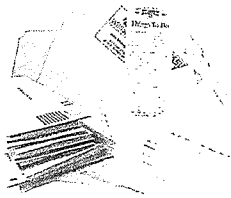


What You Can Recycle

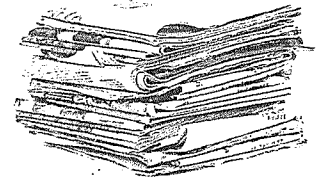
PAPER



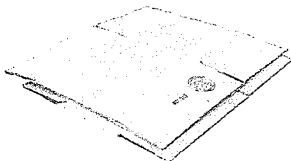
Office paper,
junk mail, folders



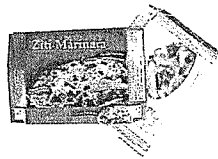
Magazines, catalogs and
telephone books



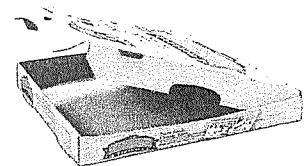
Newspaper, including inserts



Cardboard
(flattened to fit in your bin or cart)

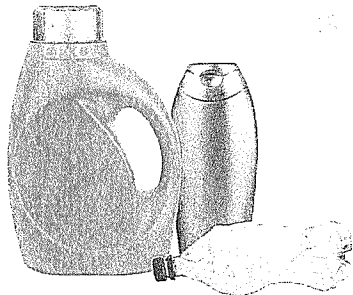


Paperboard



Clean Pizza Boxes

PLASTIC BOTTLES & JUGS

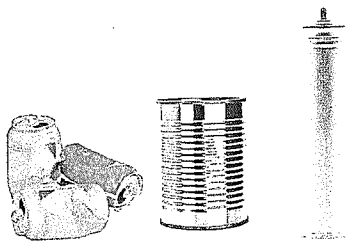


CARTONS



(caps and straws removed)

METALS



Aluminum cans, steel & tin cans

GLASS BOTTLES & JARS



(any color)

UNACCEPTABLE MATERIALS

- Plastic bags
- Styrofoam
- Medical sharps or syringes
- Window or drinking glass
- Coat hangers or scrap metal
- Plastics that are not bottles or jugs

RUMPKE

